

multiFiltratePRO HL7 connectivity

Efficient and secure device interoperability

In the critical care setting, device connectivity to electronic medical records is designed to enhance the quality of patient care and healthcare operations.

Access the benefits of data integration with multiFiltratePRO HL7 connectivity:

Data-based clinical decision making

Accurate and faster electronic documentation¹ makes information available for data-driven clinical decisions

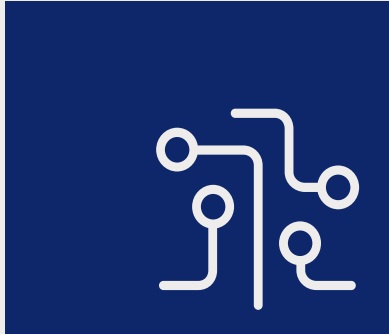
Streamline workflows

Staff spends less time manually documenting¹, which may help focus on what matters most – patient care

Reduce errors

Electronic documentation reduces the risk of transcription errors¹





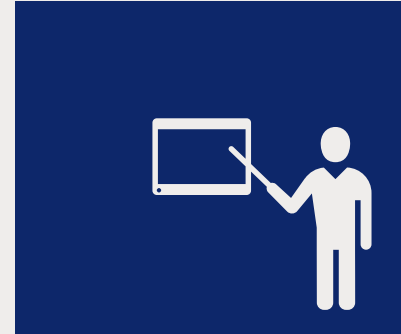
One connection

Connect with leading Patient Data Management Systems (PDMS) and middleware providers using HL7 standard communication protocol



Secure

Transmit information through current data protection and security standards, including modern encryption protocols



Support and training

Count on our support, from planning and installation to future updates

Network specifications

Ethernet: 10/100 Mbps, RJ-45 port		
802.1X Ethernet port security	Device operating in client and host mode	TLS1.2* encryption
Static IP address or DHCP*	Supporting NTP*	HL7 2.6

*Abbreviations: IP: Internet Protocol, DHCP: Dynamic Host Configuration Protocol, NTP: Network Time Protocol, TLS: Transport Layer Security

multiFiltratePRO-HL7-connector

Description	Article no.
Built-in connectivity option to support HL7	On request

Connect with us

To connect multiFiltratePRO to your PDMS, contact your local Fresenius Medical Care representative

References:

1. Fielor VK, Jaglowski T, Richards K. Eliminating errors in vital signs documentation. *Comput Inform Nurs.* 2013;31(9):422-427.